

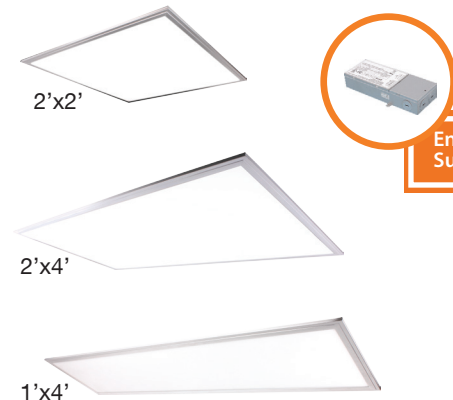
Project	
Schedule	Date
Notes	
Catalog Number	

Flat Panel

Product Description

AGT's Premium Flat Panel has integrated LED technology with a low profile design. The perfect solution for your interior lighting needs. Our lightweight LED flat panel provides a smooth and uniform light distribution from edge-to-edge for an even and consistent color design.

The LED Panel is designed for easy installation and maximum energy savings. The Flat Panel comes in standard configurations of 1x4, 2x2, and 2x4 for mounting in T-Bar/Grid ceilings and can also be ordered with an optional surface mount/box kit.



Enclosed Power
Supply Box



Features & Benefits

- ▶ DLC 4.2 Premium/ Standard
- ▶ Lightweight for easy installation
- ▶ Uniform and excellent consistency
- ▶ Long Life LED Chip
- ▶ Excellent Thermal design

Specifications

- ▶ Input line voltage: 120-277
- ▶ Powerfactor >0.9
- ▶ 0-10V Dimming
- ▶ Operating temperature: -22°F ~ 122°F
- ▶ Available in 2'x2', 1'x4', 2'x4' configurations
- ▶ Beam Angle 120°
- ▶ Usage Temp: -20 - 45°C / -4 - 113°F
- ▶ Storage Temp: -30 - 65°C / -22 - 149°F

Applications

- ▶ Conference/ Meeting Room
- ▶ Factories/ Offices
- ▶ Education
- ▶ Hospitals
- ▶ Hospitalities
- ▶ Hotels



Optional Accessories

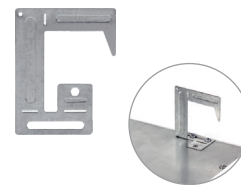
- ▶ Surface Mount Kit



Surface Mount Kit

Included with Fixture

- ▶ Earthquake Hook (Pre-installed)



Earthquake Hook

Ordering Information

*P= Premium DLC / *S = Standard DLC

Code	Description	CCT	Watt	Lumen	Equiv Wattage	Size	Beam Angle	Dim	Rated Hrs	UL Damp	DLC
7101	LED-FXPNL32/1X4/840	4000K	32	3,804	60-70W	1' X 4'	120°	0-10V	50,000	•	P
7100	LED-FXPNL25/2X2/840	4000K	25	3,040	50-60W	2' X 2'	120°	0-10V	50,000	•	P
7102	LED-FXPNL40/2X4/840	4000K	40	5,005	90-100W	2' X 4'	120°	0-10V	50,000	•	P
7675	LED-FXPNL40/1X4/840	4000K	40	4,000	60-70W	1' X 4'	120°	0-10V	50,000	•	S
7674	LED-FXPNL40/2X2/840	4000K	40	4,000	60-70W	2' X 2'	120°	0-10V	50,000	•	S
7676	LED-FXPNL50/2X4/840	4000K	50	5,000	60-70W	2' X 4'	120°	0-10V	50,000	•	S

Accessories (available for purchase)

Surface Mount Kit

P10096 MT-1x4BOX
(1 x 4 Edge-Lit Surface Mount Kit)

P10097 MT-2x2BOX
(2 x 2 Edge-Lit Surface Mount Kit)

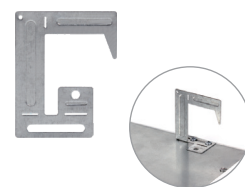
P10098 MT-2x4BOX
(2 x 4 Edge-Lit Surface Mount Kit)



Earthquake Hook

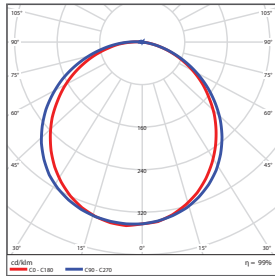
P10099 MT-PNL-HOOK-4PCS
Earthquake hook for 2x2 and 1x4

P10100 MT-PNL-HOOK-6PCS
Earthquake hook for 2x4



Photometric Data

2' x 2' (Premium DLC)

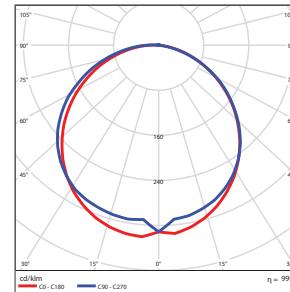


Zonal Lumen Summary

Zone	Lumens	% Luminaire
0-30	805.75	26.70
0-40	1320.55	43.70
0-60	2331.93	77.20
60-80	586.94	19.40
70-80	220.24	7.30
90-120	12.78	0.40
90-180	15.86	0.50
0-180	3020.81	100.00

Total Luminaire Efficiency = 100.00%

1' x 4' (Premium DLC)

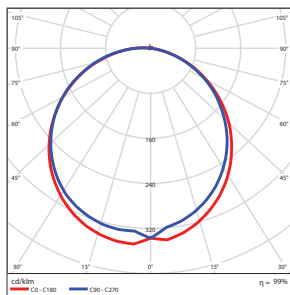


Zonal Lumen Summary

Zone	Lumens	% Luminaire
0-30	984.57	26.10
0-40	1623.74	43.10
0-60	2898.2	76.90
60-80	748.72	19.90
70-80	281.12	7.50
90-120	13.79	0.40
90-180	17.62	0.50
0-180	3768.87	100.00

Total Luminaire Efficiency = 100.00%

2' x 4' (Premium DLC)

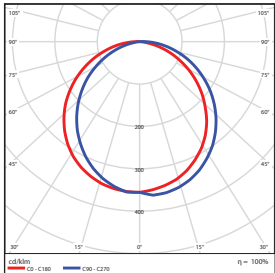


Zonal Lumen Summary

Zone	Lumens	% Luminaire
0-30	1321.26	26.20
0-40	2165.68	43.00
0-60	3843.01	76.30
60-80	1008.31	20.00
70-80	384.37	7.60
90-120	27.96	0.60
90-180	32.25	0.60
0-180	5039.69	100.00

Total Luminaire Efficiency = 100.00%

2' x 2' (Standard DLC)

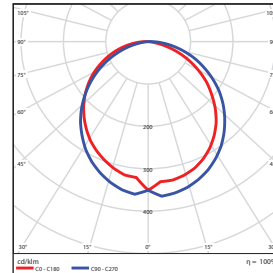


Zonal Lumen Summary

Zone	Lumens	% Luminaire
0-30	1122.04	27.50
0-40	1831.57	44.90
0-60	3208.57	78.70
60-80	774.61	19.00
70-80	284.61	7.00
90-120	5.74	0.10
90-180	5.74	0.10
0-180	4077.96	100.00

Total Luminaire Efficiency = 100.00%

1' x 4' (Standard DLC)

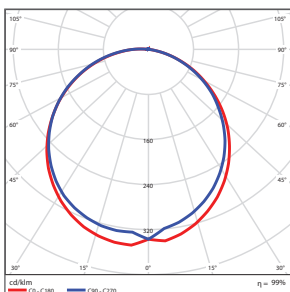


Zonal Lumen Summary

Zone	Lumens	% Luminaire
0-30	1112.95	27.30
0-40	1820.51	44.70
0-60	3205.25	78.70
60-80	775.97	19.10
70-80	281.88	6.90
90-120	5.62	0.10
90-180	5.62	0.10
0-180	4070.4	100.00

Total Luminaire Efficiency = 100.00%

2' x 4' (Standard DLC)

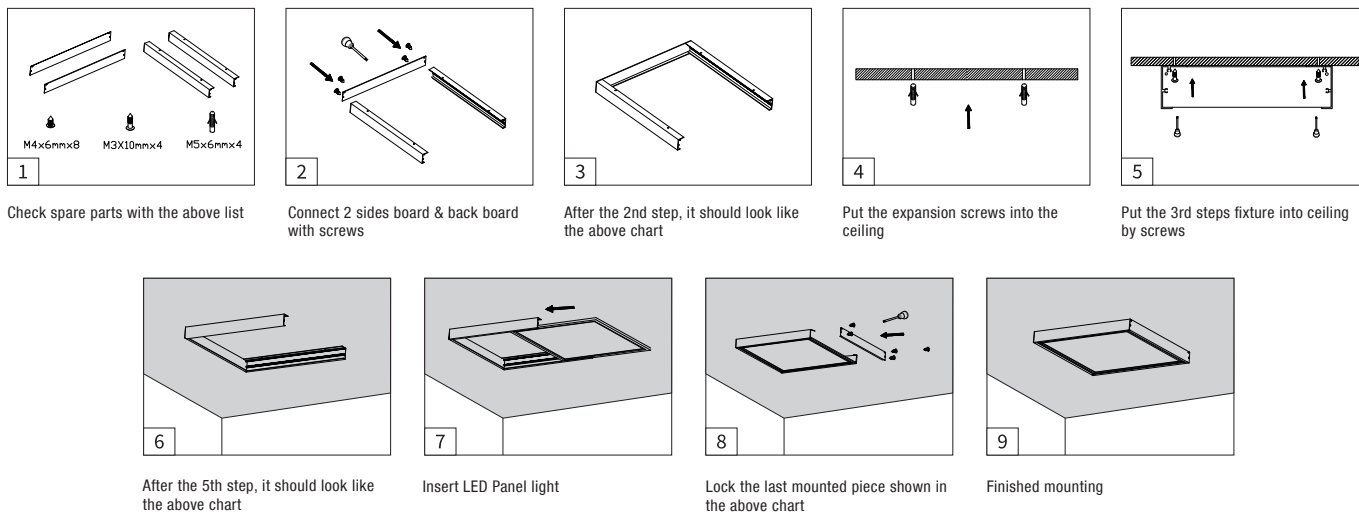


Zonal Lumen Summary

Zone	Lumens	% Luminaire
0-30	1263.09	27.30
0-40	2065.44	44.70
0-60	3636.83	78.70
60-80	882.33	19.10
70-80	320.64	6.90
90-120	6.47	0.10
90-180	6.47	0.10
0-180	4623.25	100.00

Total Luminaire Efficiency = 100.00%

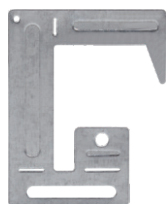
Surface Mount Kit



Earthquake Hook



1. Pull earthquake hook away from panel until facing perpendicular to the panel backing (Fig. 1).
2. Bend hook arm until facing perpendicular to the hook body (Fig. 2).
3. Hook panel light onto T-bars until panel is fully supported (Fig. 3).



Earthquake Hooks



Before Installation

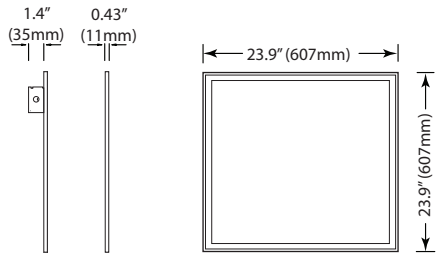


After Installation

Product Dimension

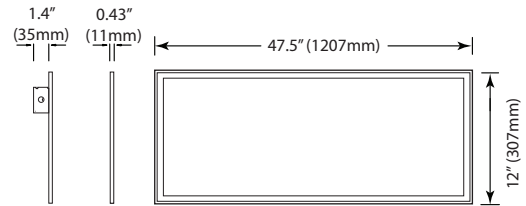
2' x 2'

Weight: 7.15-lbs



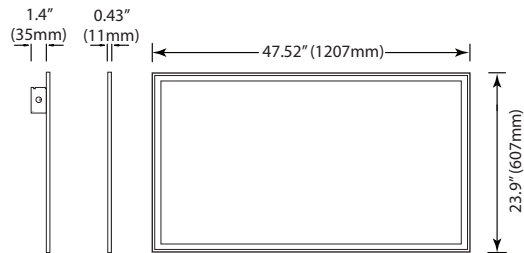
1' x 4'

Weight: 7.70-lbs

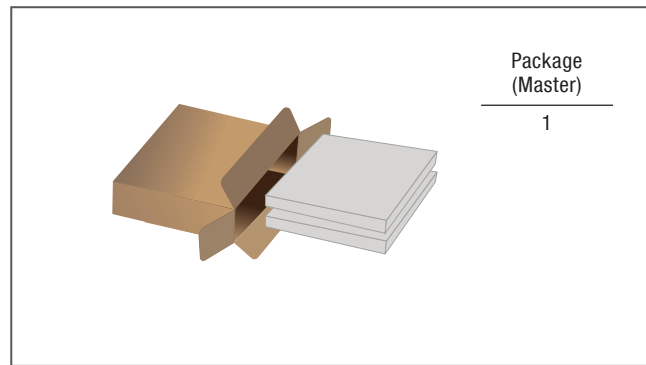


2' x 4'

Weight: 13.2-lbs

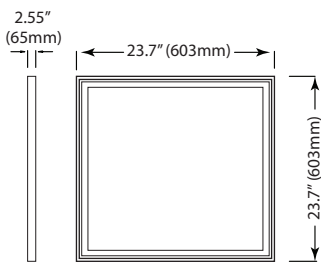


Package



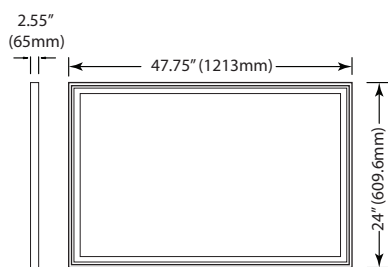
Surface Mount Kit Dimension

MT-2X2BOX



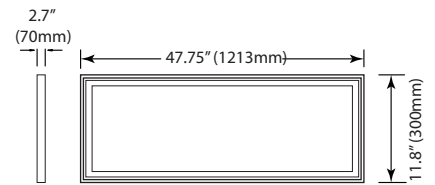
P10097 MT-2x2BOX
(2 x 2 Edge-Lit Surface Mount Kit)

MT-2X4BOX



P10098 MT-2x4BOX
(2 x 4 Edge-Lit Surface Mount Kit)

MT-1X4BOX



P10096 MT-1x4BOX
(1 x 4 Edge-Lit Surface Mount Kit)